



1



2



3



4



5



6



7



8



9



10



11



12



13



14



15



16



17



18



19

MATERIAL

Aluminium, oval cross section bar, with antibacterial epoxy resin coating, RAL 9005 black colour.

STANDARD EXECUTION

Threaded blind holes.

FEATURES AND APPLICATIONS

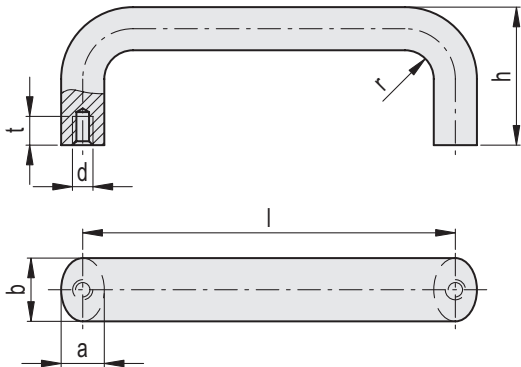
GN 565-SMA handles have a silver molybdate-based powder coating which gives them antimicrobial properties.

The principle of action that is activated reduces the contamination of surfaces within 24 hours, so that in the end less than 1% of bacteria and less than 5% of viruses survive.

They are generally used in the healthcare sector, in public buildings such as airports, railway stations, stadiums, etc.

SPECIAL EXECUTIONS ON REQUEST

Lengths and colours other than the standard executions.



| Code | Description | b | d | l±0.25 | a | h | r | tmin | ⚖ |
|----------|-------------------|----|----|--------|----|----|----|------|-----|
| GN.64682 | GN 565-20-100-SMA | 20 | M6 | 100 | 13 | 49 | 13 | 10 | 87 |
| GN.64687 | GN 565-20-112-SMA | 20 | M6 | 112 | 13 | 49 | 13 | 10 | 93 |
| GN.64702 | GN 565-20-128-SMA | 20 | M6 | 128 | 13 | 51 | 13 | 10 | 114 |
| GN.64707 | GN 565-20-160-SMA | 20 | M6 | 160 | 13 | 51 | 13 | 10 | 121 |
| GN.64747 | GN 565-26-128-SMA | 26 | M8 | 128 | 17 | 55 | 17 | 12 | 189 |
| GN.64752 | GN 565-26-160-SMA | 26 | M8 | 160 | 17 | 57 | 17 | 12 | 210 |
| GN.64762 | GN 565-26-192-SMA | 26 | M8 | 192 | 17 | 57 | 17 | 12 | 245 |
| GN.64767 | GN 565-26-300-SMA | 26 | M8 | 300 | 17 | 57 | 17 | 12 | 345 |